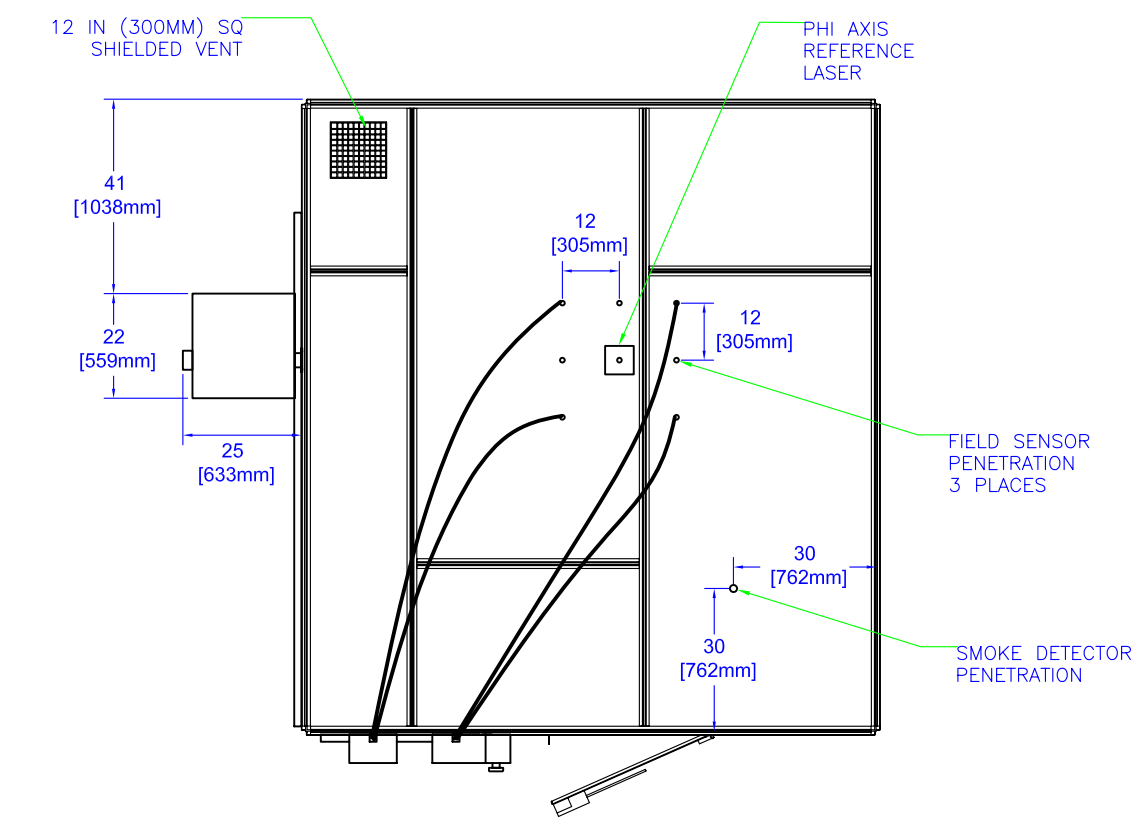
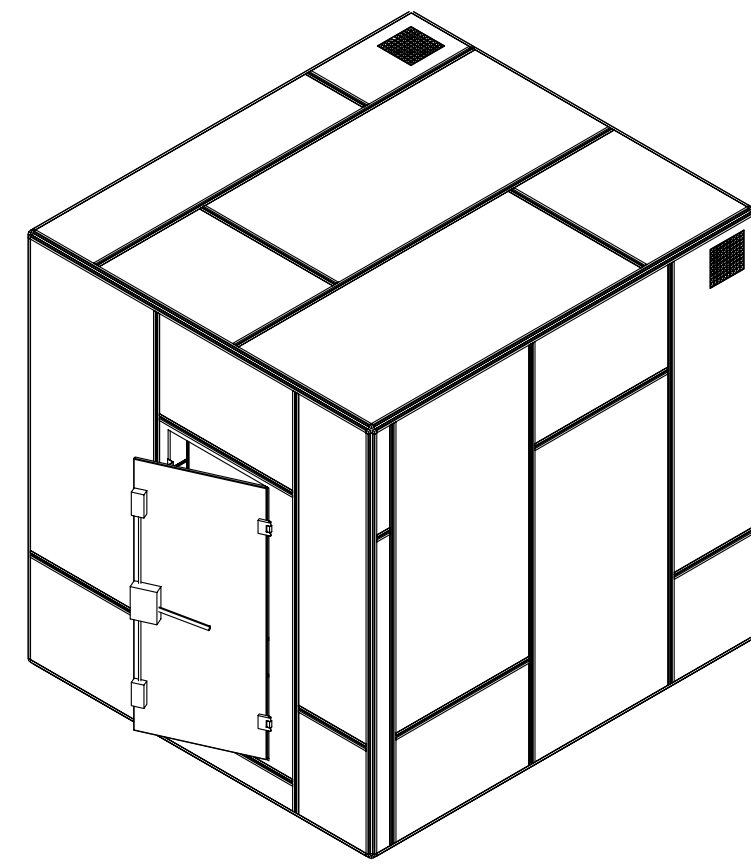
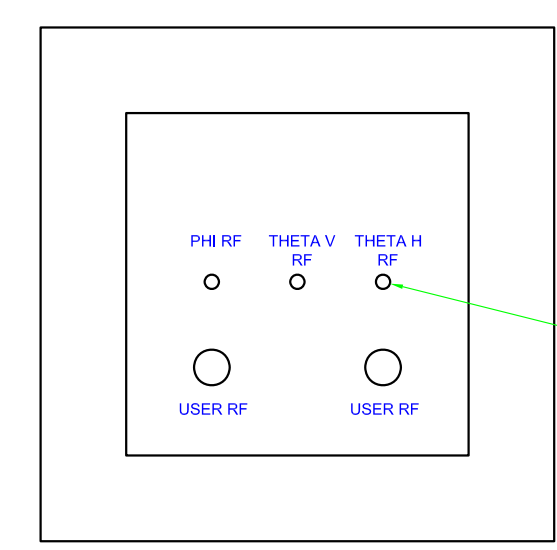
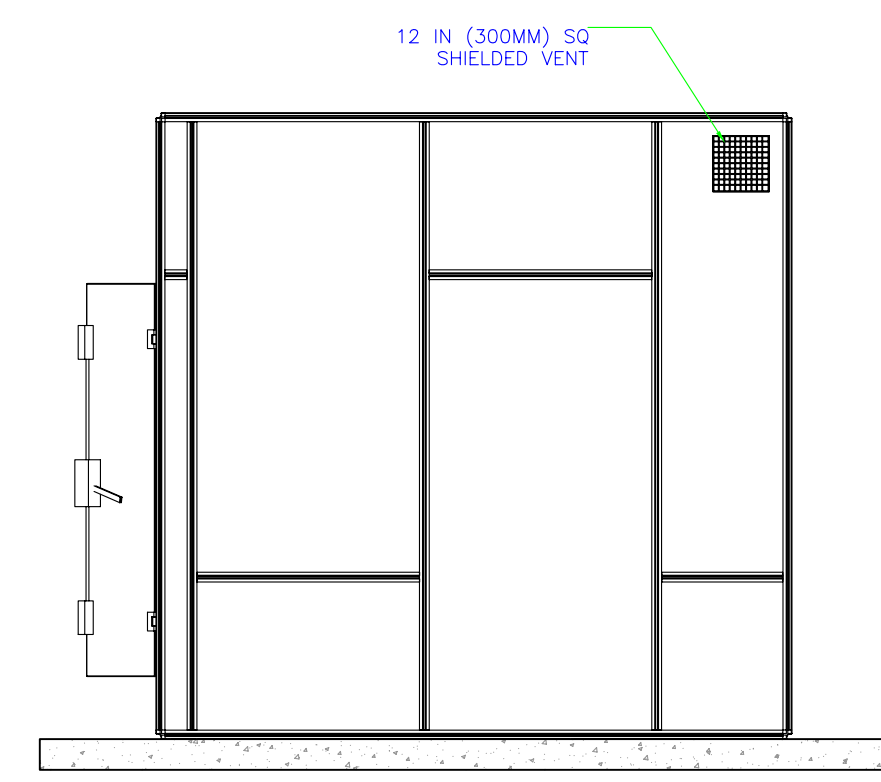
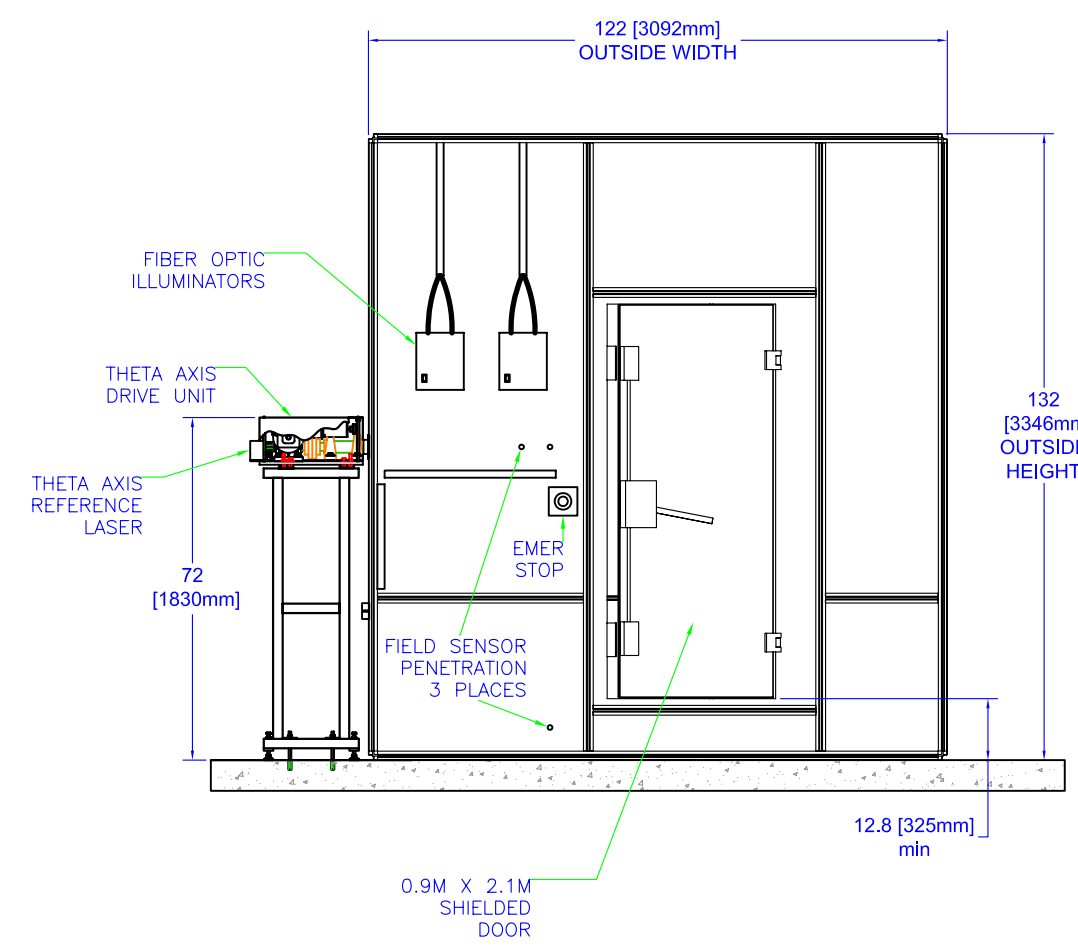
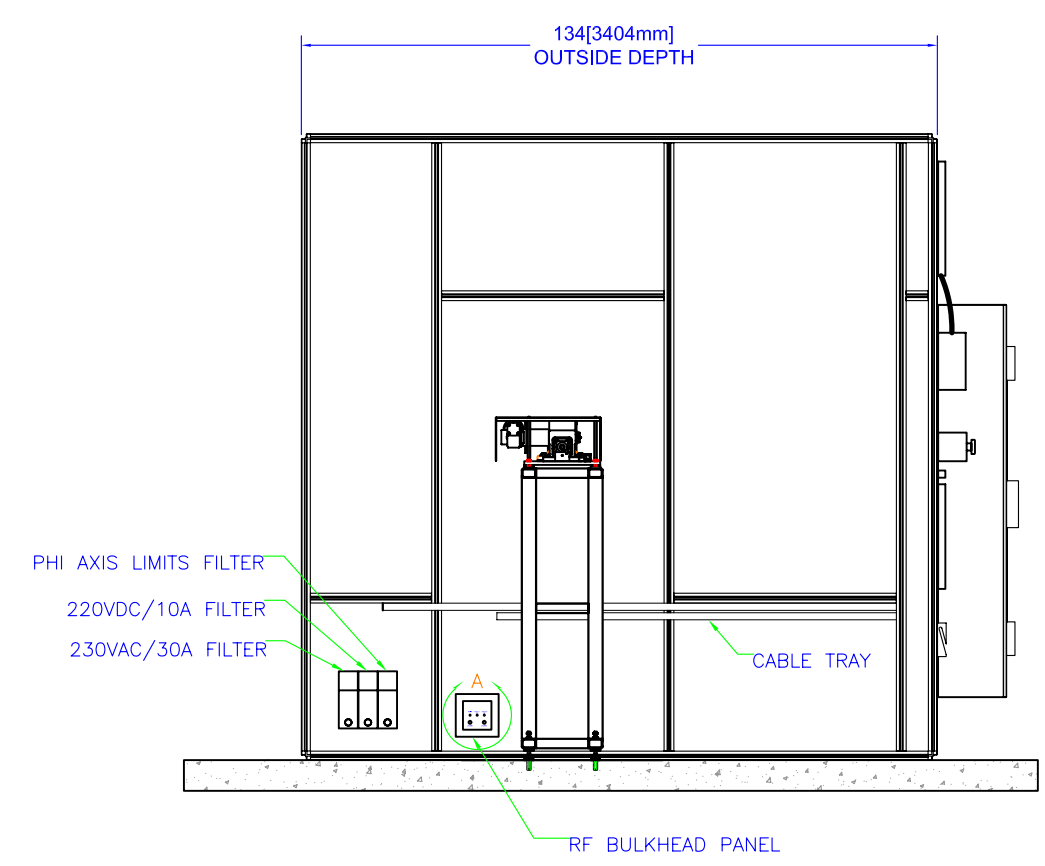


REVISION HISTORY			
REV	DESCRIPTION	DATE	APPROVED
A	CHG OUTSIDE DIMS IN TEXT	14JUL09	CWS



FACILITY REQUIREMENTS:

1. TEST CHAMBER OUTSIDE DIMENSIONS ARE 122 X 134 X 132 IN HIGH (3.092 X 3.404 X 3.346 M HIGH). RECOMMENDED FLOOR PLAN PROVIDES 48 IN (1.2M) CLEARANCE AROUND ELEV DRIVE UNIT, 72 IN (1.8M) CLEARANCE IN FRONT OF TEST CHAMBER, AND 18 IN (0.6m) CLEARANCE ABOVE TEST CHAMBER.
2. TEST CHAMBER IS A STAND-ALONE MODULAR SHIELDED CHAMBER LINED WITH RF ANECHOIC MATERIAL. TOTAL SYSTEM WEIGHT IS 6000 LB (2720 KG). MAXIMUM FLOOR LOAD IS 150 LB/SQ FT (732 KG/SQ M).
3. FLOOR SURFACE BENEATH CHAMBER MUST BE SMOOTH AND FLAT TO WITHIN 1/8 IN OVER 10 FT (3 MM OVER 3 M).
4. TEST CHAMBER MUST BE CONNECTED TO ELECTRICAL GROUND. A GROUNDING STUD IS PROVIDED WITH THE CHAMBER AND CAN BE FIELD INSTALLED AT A CONVENIENT LOCATION.
5. SYSTEM RF AND CONTROL CABLING IS ROUTED TO LEFT FRONT CORNER OF TEST CHAMBER. AN EQUIPMENT RACK OR TABLE IS REQUIRED TO SUPPORT THE SYSTEM CONTROLLER AND RF EQUIPMENT. A DEDICATED 120V/20A/1PH OR 240V/10A/1PH ELECTRICAL CIRCUIT TERMINATING IN STANDARD RECEPTACLES IS REQUIRED TO POWER MEASUREMENT EQUIPMENT AND SHOULD BE PERMANENTLY INSTALLED IN THIS AREA.
6. HVAC SUPPLY/RETURN VENTS ARE 12 IN (300 MM) SQUARE AND HAVE SHEET METAL FLANGES FOR ATTACHMENT OF DUCTING. EITHER VENT MAY BE USED FOR SUPPLY. DUCTING IS NOT REQUIRED FOR RETURN VENT. STANDARD OFFICE AIR SUPPLY VOLUME IS SUFFICIENT FOR TEST CHAMBER.
7. A SHIELDED SPRINKLER PENETRATION IS PROVIDED IN THE CHAMBER CEILING. CONNECTION FITTING IS 1" NPT.
8. CHAMBER LIGHTING IS PROVIDED BY FIBER OPTIC LITE PIPES. THE ILLUMINATORS REQUIRE 120V/5A/1PH OR 240V/2.5A/1PH. ILLUMINATORS ARE SUPPLIED WITH 10 FT (3M) POWER CORDS FOR CONNECTION TO STANDARD RECEPTACLES. ILLUMINATORS CONTAIN INTEGRAL CIRCUIT BREAKER/SWITCH UNITS AND MAY BE HARD-WIRED TO HOST BUILDING ELECTRICAL SUPPLY IF DESIRED.



SYSTEM CONNECTORS ARE SMA-F
USER CONNECTORS ARE N-F

UNLESS OTHERWISE SPECIFIED DIMENSIONS ARE IN INCHES		THE HOWLAND COMPANY, INC. 4540 Atwater Court, Suite 107 Buford, GA 30518 678-546-5680 www.thehowlandcompany.com	
THIRD ANGLE PROJECTION		TITLE 3500 WTL CETECOM INSTALLATION FACILITY INTERFACE CONTROL DRAWING	
APVD	DATE	SIZE	CAGE CODE
DWN CWS	DATE 10JUL09	D	5V978
DSGN	DATE 10JUL09	SCALE	DWG NO
		1:40	P0040102
		REV	
		A	
		SHEET 1 OF 1	